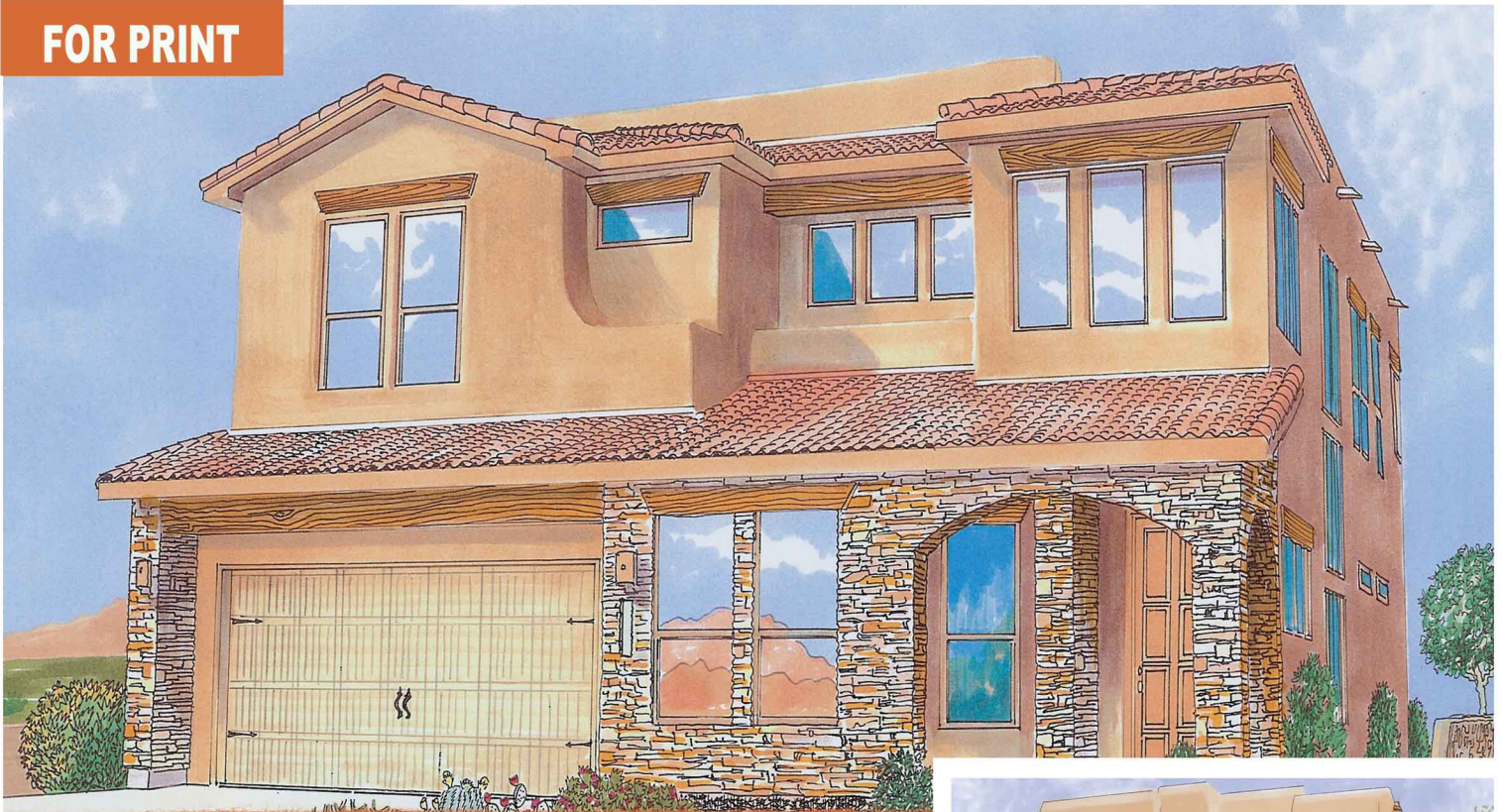


**FOR PRINT**



## *Milano* 3007 sq. ft.

**3 Bedrooms ■ 2.5 Baths ■ Den ■ Loft ■ 2 Car / Workshop**

The covered front entry of the "Milano" invites you into a magnificent circular foyer, from which you can enter either the den or the formal dining room, dramatic with its two-story ceiling and view of the curving staircase.

You're sure to feel at home in the family room, ideal for both everyday family life and entertaining, with the island bar serving as a gathering point for family and friends. The kitchen opens to a large dining nook with doors leading to the covered patio. A two car garage and huge workshop with a side entry complete the lower level.

With an open view of the dining room, the curved staircase leads you to the loft...ideal for a media room, game room or library. The master suite is exceptionally private, with double doors leading to a spacious sitting area and bedroom. The master bath includes separate sinks, a walk-in closet and a covered deck... a wonderful place to read or just relax.

Two more bedrooms, a full bath, and the utility room are included on the second floor.

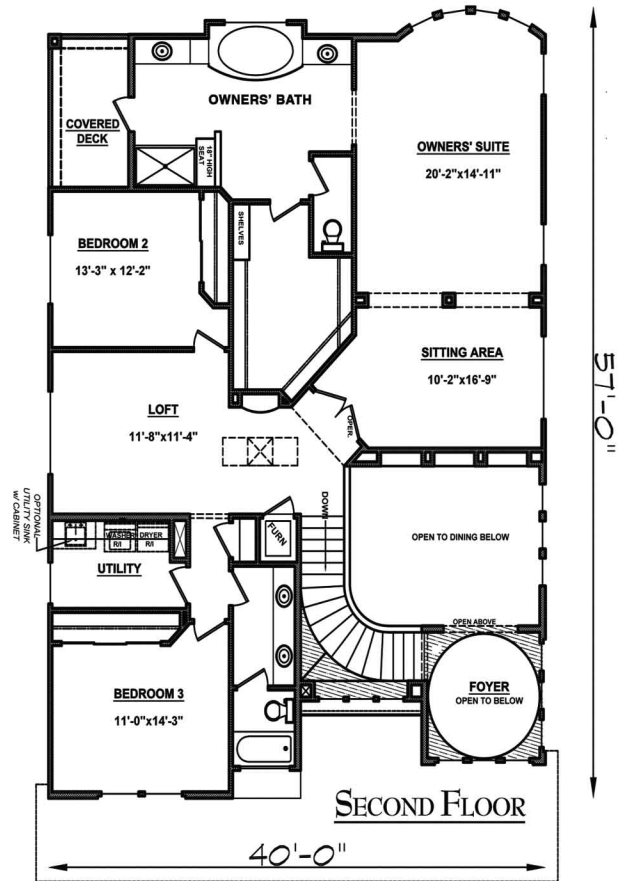
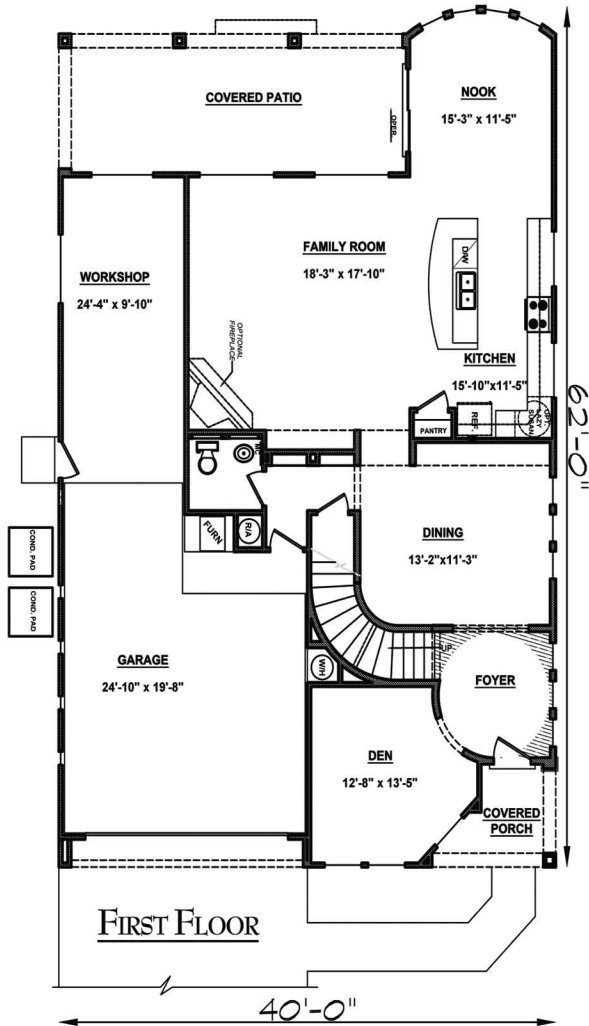
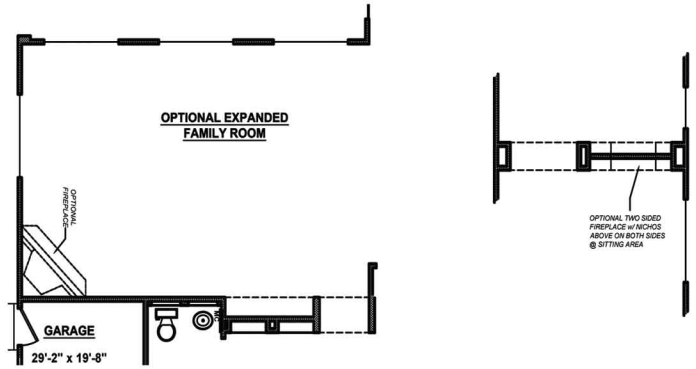
Your lifestyle, Your home, Your way.



W a l l e n   H o m e s

# Milano 3007 sq. ft.

3 Bedrooms ■ 2.5 Baths ■ Den ■ Loft ■ 2 Car / Workshop



Notes

All square footage is approximate. Renderings are artist's conceptions and may vary slightly from actual home. Windows and/or skylights may vary with exterior design. Homes may be built in reverse of plan shown, depending on site conditions. Minor architectural changes may be made from time to time at the option of the builder. Model homes may feature upgrade options at additional expense. Please consult your Sales Professional for details.



877-WALLEN-1 MyWallenHome.com



Wallen  
Homes