

For Print



Verona 2011 sq. ft.

3 Bedrooms ■ 2 Baths ■ 3 Car Tandem

Designed to live large, the "Verona" offers the perfect balance of function, flow and aesthetics....beautifully livable in every sense.

You'll immediately notice the wide covered patio, leading to an equally large foyer. Your first impression will be one of gracious living as you enter the formal dining room and sense the warmth and comfort of the adjoining great room.

Friends and family will enjoy casual conversation at the lengthy bar separating the great room from the kitchen, and the culinary expert in your family will truly appreciate the kitchen...a space designed to be both visually pleasing and efficient.

The kitchen opens to a large nook...ideal for family meals, homework or a quiet cup of coffee at the table or outside on the covered patio. A large owner's suite with a double vanity and large walk-in closet plus two more bedrooms, a full bath, utility room and three-car tandem garage complete this lovely home.

Your lifestyle, Your home, Your way.

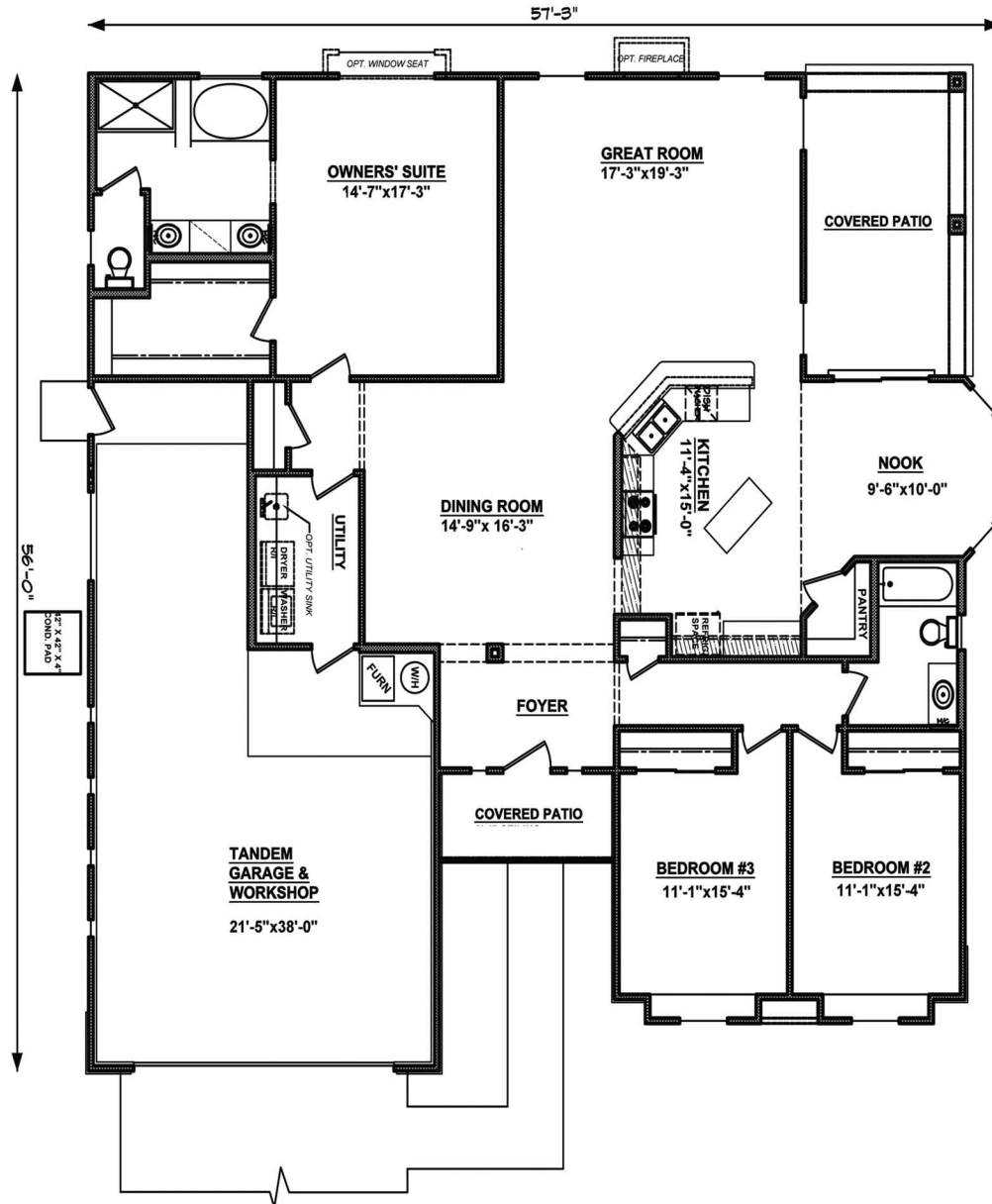


W a l l e n H o m e s

Verona 2011 sq. ft.

3 Bedrooms ■ 2 Baths ■ 3 Car Tandem

Notes



All square footage is approximate. Renderings are artist's conceptions and may vary slightly from actual home. Windows and/or skylights may vary with exterior design. Homes may be built in reverse of plan shown, depending on site conditions. Minor architectural changes may be made from time to time at the option of the builder. Models homes may feature upgrade options at additional expense. Please consult your Sales Professional for details.



Wallen
Homes